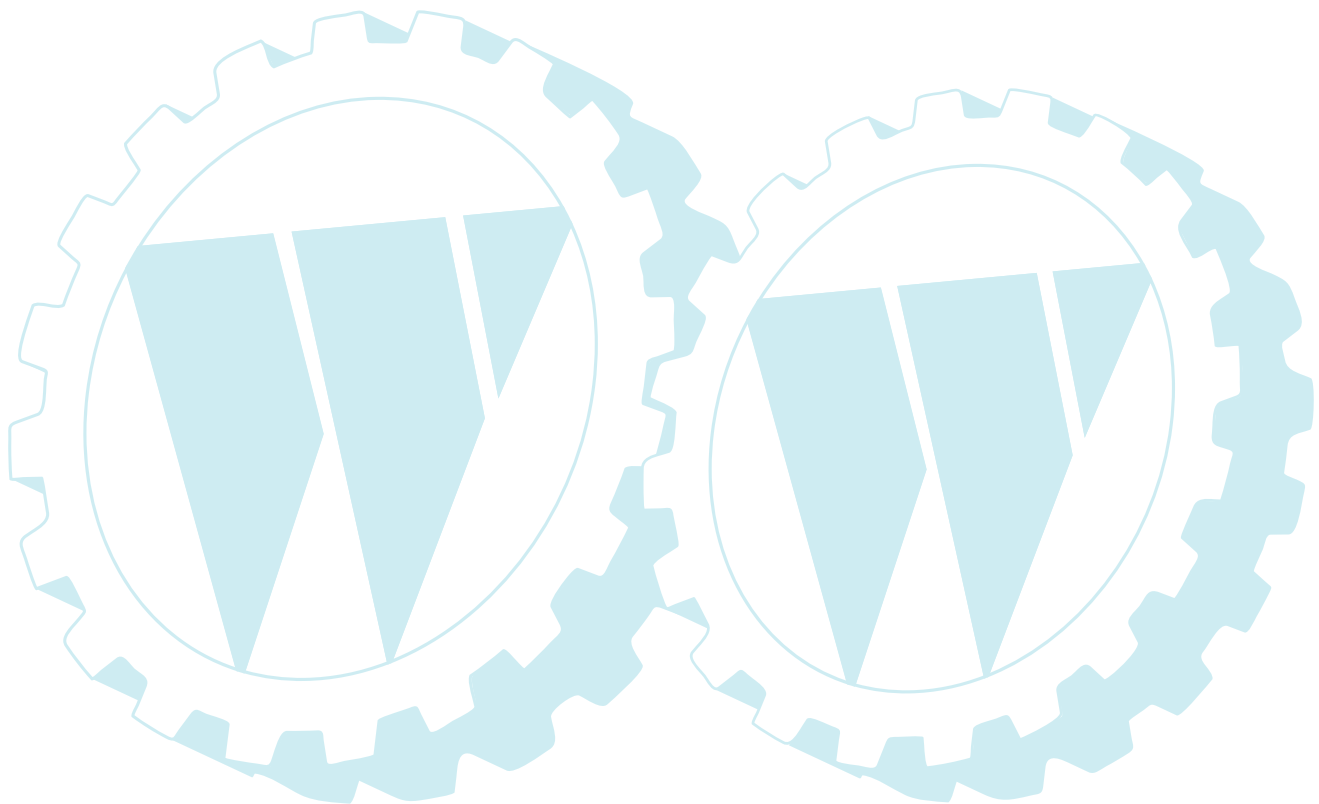


ILLUSTRATED PARTS LIST

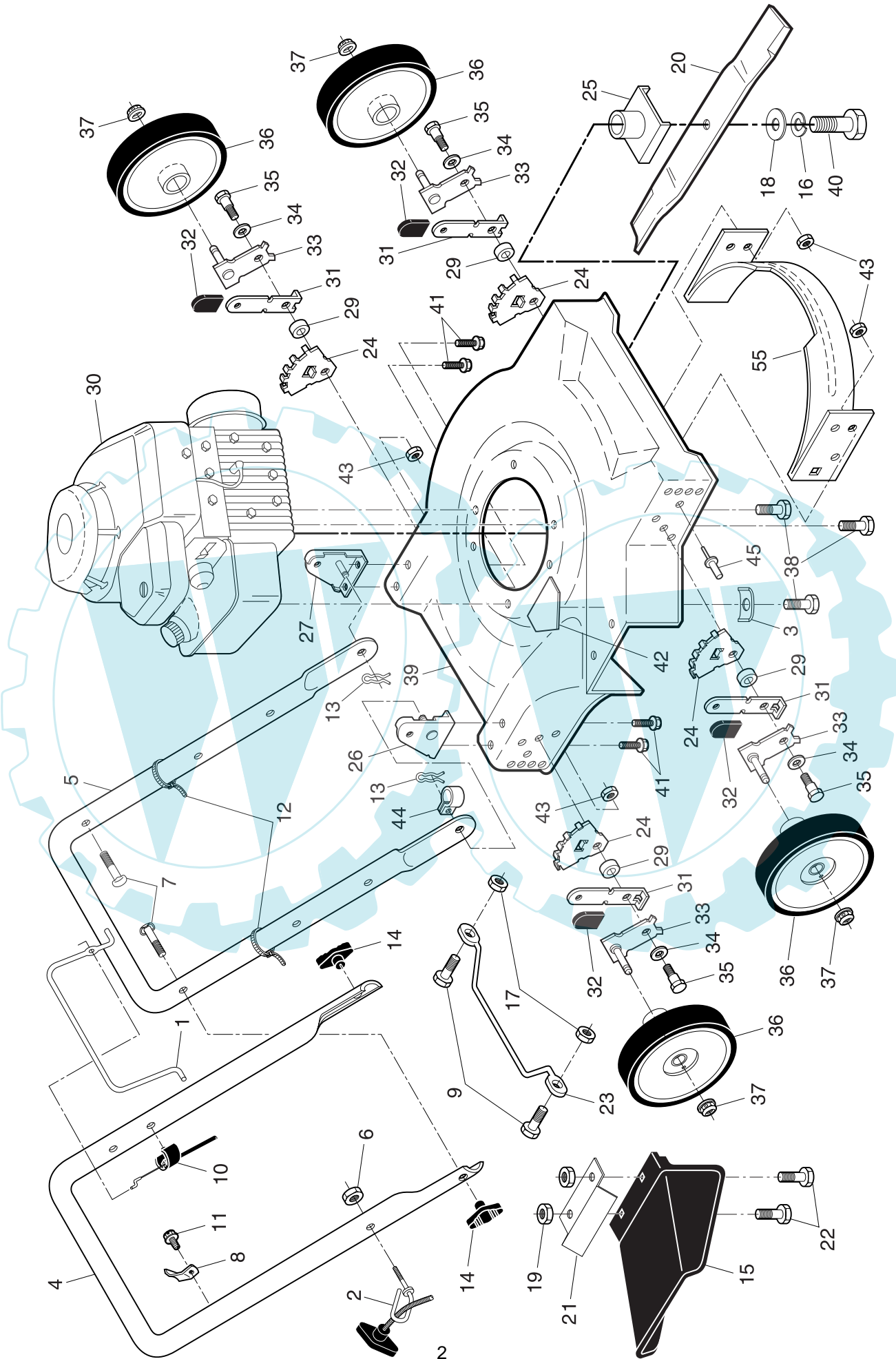
CUSTOMER MODEL NUMBER FL350KD

PRODUCT NUMBER 961 11 00-03

MFG. ID. NUMBER 96111000300



ROTARY LAWN MOWER -- CUSTOMER MODEL NO. FL350KD (96111000300) PRODUCT NO. 961 11 00-03



ROTARY LAWN MOWER -- CUSTOMER MODEL NO. FL350KD (96111000300) PRODUCT NO. 961 11 00-03

KEY NO.	PART NO.	DESCRIPTION	KEY NO.	PART NO.	DESCRIPTION
1	532 19 60-25	Control Bar	25	532 85 09-77	Blade Adapter
2	532 17 95-85	Rope Guide	26	532 17 09-75	Handle Bracket Assembly, RH
3	532 12 50-78	Engine Washer	27	532 17 09-77	Handle Bracket Assembly, LH
4	532 19 60-26	Upper Handle	29	532 14 66-30	Spacer
5	532 15 50-44	Lower Handle	30	- - -	Engine, Briggs & Stratton, Model Number 9D902 (order parts from engine manufacturer)
6	532 13 20-04	Nut, Hex	31	532 14 17-30	Selector Spring
7	532 19 15-74	Handle Bolt 5/16-18 x 1-3/4	32	532 08 78-77	Selector Knob
8	532 12 52-03	Up-Stop Bracket	33	532 14 98-57	Axle Arm Assembly
9	532 08 58-25	Screw	34	532 06 23-35	Belleville Washer
10	532 16 27-78	Engine Zone Control Cable	35	532 14 27-48	Shoulder Bolt
11	532 75 06-34	Nut, Hex	36	532 80 00-60	Wheel & Tire Assembly
12	532 06 64-26	Wire Tie	37	532 08 39-23	Nut, Hex
13	532 05 17-93	Hairpin Cotter	38	532 15 04-06	Hex Head Thread Rolling Screw 3/8-16 x 1-1/8
14	532 19 19-38	Handle Knob	39	532 19 66-46	Lawn Mower Housing
15	532 75 20-52	Discharge Guard	40	532 85 10-84	Hex Head Screw 3/8-24 x 1-3/8 Grade 8
16	532 85 02-63	Helical Lockwasher 3/8	41	532 14 97-41	Thread Cutting Screw 5/16-18 x 3/4
17	532 06 91-80	Nut, Hex	42	532 18 21-66	Danger Decal
18	532 85 10-74	Hardened Washer	43	532 75 15-92	Locknut, Hex 3/8-16
19	873 80 04-00	Nut, Hex	44	532 19 27-70	Clip, Cable
20	532 14 51-06	Blade, 20"	45	532 12 84-15	Pop Rivet
21	532 16 22-34	Hold Down Bracket	55	532 14 15-19	Front Baffle
22	874 76 04-12	Bolt	--	532 14 15-20	Rear Baffle (not shown)
23	532 15 41-47	Footguard	--	532 19 54-31	Operator's Manual, European
24	532 13 99-01	Wheel Adjusting Bracket	--	532 19 54-32	Operator's Manual, Scandinavian

NOTE: All component dimensions given in U.S. inches. 1 inch = 25.4 mm. **IMPORTANT:** Use only Original Equipment Manufacturer (O.E.M.) replacement parts. Failure to do so could be hazardous, damage your lawn mower and void your warranty.